

# SQL SERVER 2014 INSTALLATION & CostOS 2D Configuration



Look in your browser for this link: <http://www.microsoft.com/en-us/download/details.aspx?id=42299>. You will see the following window. Click on **Download**.

The screenshot shows the Microsoft Download Center page for Microsoft SQL Server 2014 Express. At the top, there is a Microsoft logo and the text "Download Center" with a search bar. Below this are navigation links: Shop, Products, Categories, Support, and Security. The main heading is "Microsoft® SQL Server® 2014 Express". There is a "Select Language:" dropdown menu set to "English" and a prominent red "Download" button. A descriptive paragraph states: "Microsoft SQL Server 2014 Express is a powerful and reliable free data management system that delivers a rich and reliable data store for lightweight Web Sites and desktop applications." Below this are expandable sections for Details, System Requirements, Install Instructions, and Additional Information. On the right side, there is a "Free PC updates" section with a list of update types (Security patches, Software updates, Service packs, Hardware drivers) and a "Run Microsoft Update" button. At the bottom right, there is a "Microsoft suggests" section featuring "Windows Server 2012 R2 free trial".

Choose Express **64bit\SQLEXPRESS\_x64\_ENU.exe**, to install the 64bit edition SQL or **32bit\SQLEXPRESS\_x86\_ENU.exe** for the respective 32bit edition.

The screenshot shows a window titled "Choose the download you want" with a close button in the top right corner. It features a table of download options and a "Download Summary" panel on the right.

File Name	Size
<input type="checkbox"/> Express 32BIT WoW64\SQLEXPRESS_x86_ENU.exe	149.9 MB
<input type="checkbox"/> Express 32BIT\SQLEXPRESS_x86_ENU.exe	168.4 MB
<input checked="" type="checkbox"/> Express 64BIT\SQLEXPRESS_x64_ENU.exe	196.7 MB
<input type="checkbox"/> ExpressAdv 32BIT\SQLEXPRESS_x86_ENU.exe	1.1 GB
<input type="checkbox"/> ExpressAdv 64BIT\SQLEXPRESS_x64_ENU.exe	1.1 GB
<input type="checkbox"/> ExpressAndTools 32BIT\SQLEXPRESS_x86_ENU.exe	840.8 MB

**Download Summary:**

- Express 64BIT\SQLEXPRESS\_x64\_ENU.exe

**Total Size: 196.7 MB**

Next

Choose to install the Management Tools, by clicking the following boxes, for the 64 bit edition or x86 for the 32bit edition. Click on **Next** to continue.

Choose the download you want

File Name	Size
<input type="checkbox"/> ExpressAndTools 32BIT\SQLXPRWT_x86_ENU.exe	840.8 MB
<input type="checkbox"/> ExpressAndTools 64BIT\SQLXPRWT_x64_ENU.exe	833.2 MB
<input type="checkbox"/> LocalDB 32BIT\SqlLocalDB.msi	36.6 MB
<input type="checkbox"/> LocalDB 64BIT\SqlLocalDB.msi	43.1 MB
<input type="checkbox"/> MgmtStudio 32BIT\SQLManagementStudio_x86_ENU.exe	673.0 MB
<input checked="" type="checkbox"/> MgmtStudio 64BIT\SQLManagementStudio_x64_ENU.exe	683.9 MB

Download Summary:

- Express 64BIT\SQLXPR\_x64\_ENU.exe
- MgmtStudio 64BIT\SQLManagementStudio\_x64\_ENU.exe

Total Size: 880.6 MB

Next

The files will start downloading....

Microsoft  
Download Center

Shop ▾ Products ▾ Categories ▾ Support ▾ Security ▾

Thank you for downloading

Microsoft® SQL Server® 2014 Express  
+ Install Instructions

Free PC updates

- Security patches
- Software updates
- Service packs
- Hardware drivers

Run Microsoft Update

Popular downloads

01 Microsoft® SQL Server® 2012 Express  
Microsoft® SQL Server® 2012 Express is a powerful and reliable free data management system that delivers a rich and reliable data store for lightweight Web Sites and desktop applications.

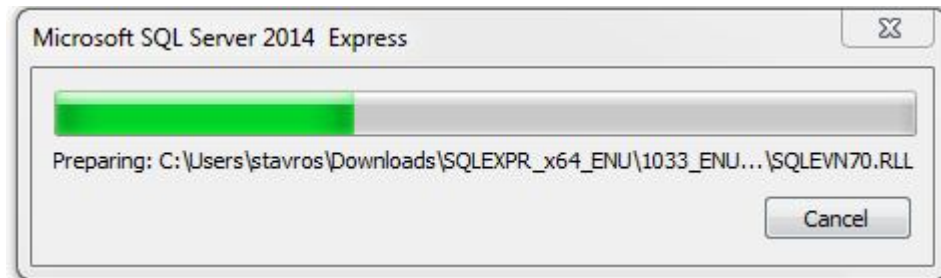
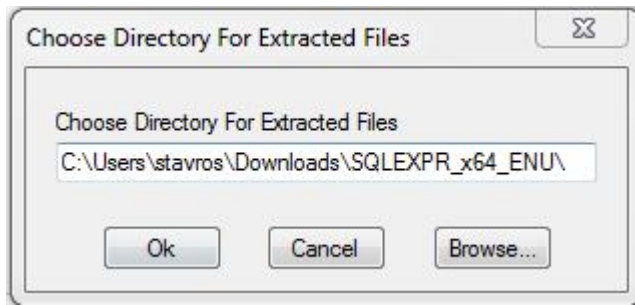
02 Microsoft® SQL Server® 2008 R2 SP2 - Express Edition  
Microsoft® SQL Server® 2008 R2 SP2 is a free and feature-rich database for

Microsoft suggests  
Windows Server 2012 R2 free trial  
Experience the new and

After downloading choose `_x64_ENU` to install the Server.



Choose the directory for the extracted files and click Ok.



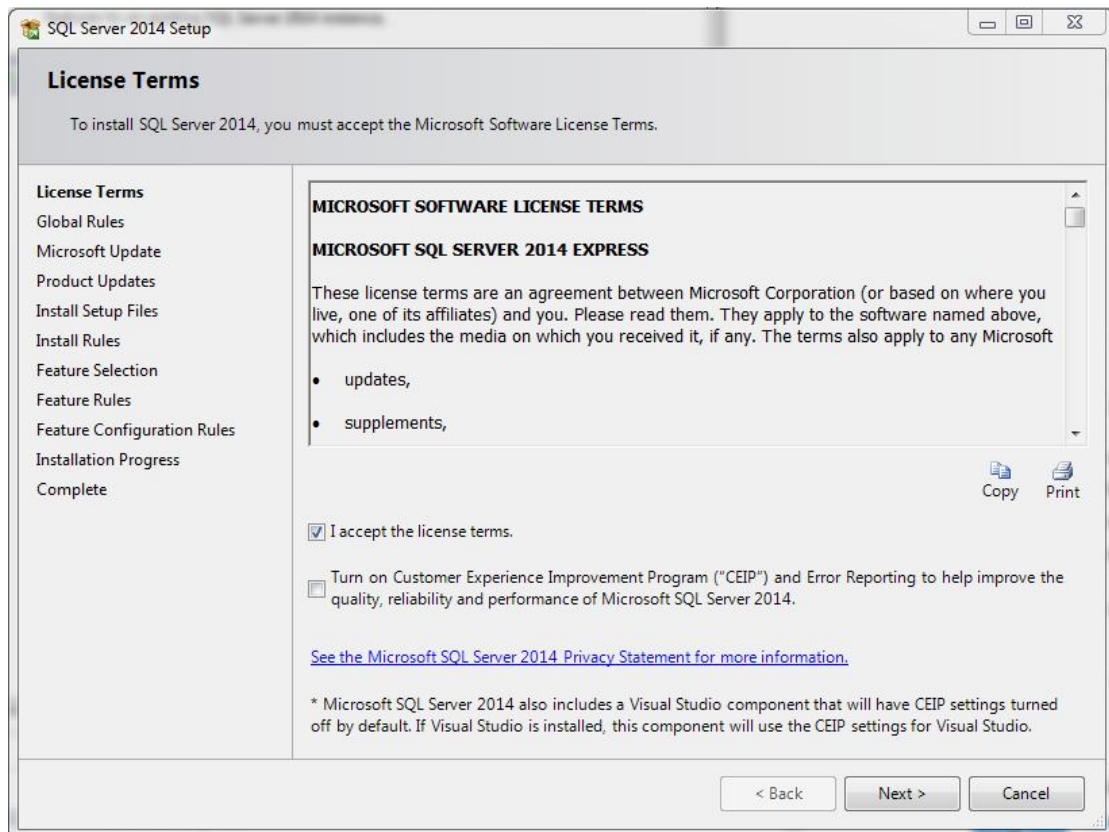
After the extraction of the files you will get the following window. Choose **New SQL Server stand-alone....**



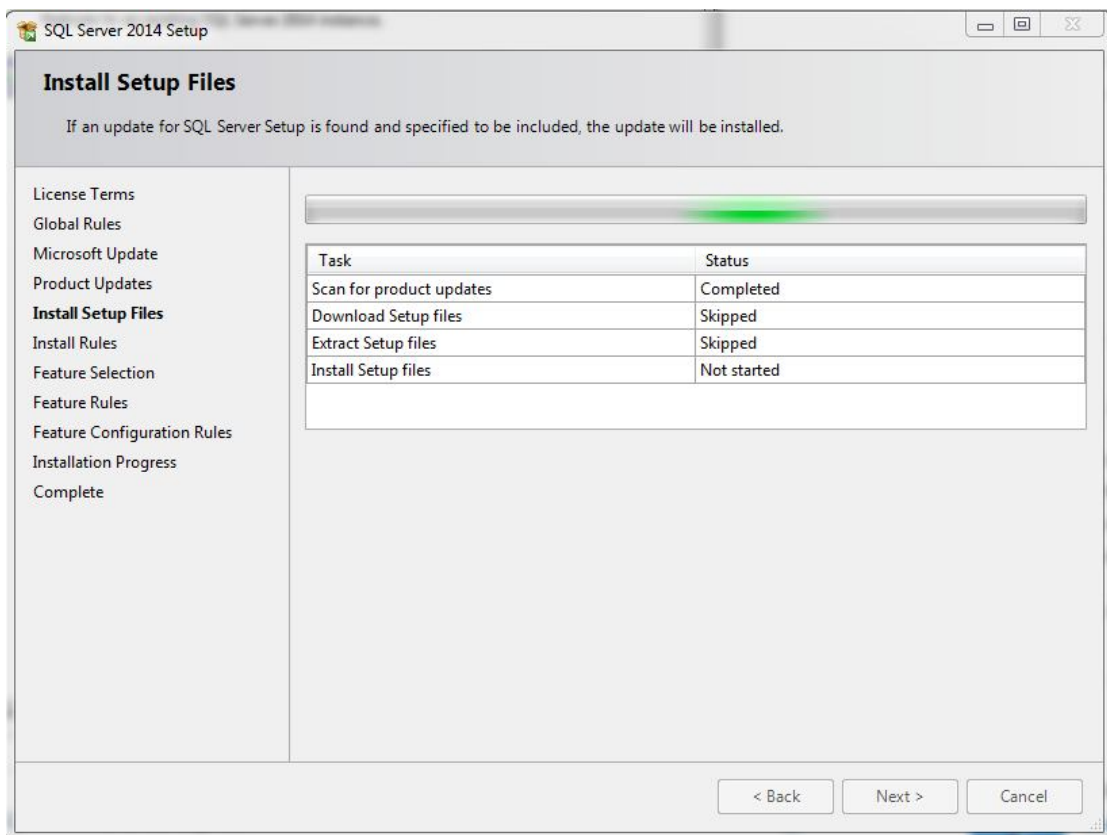
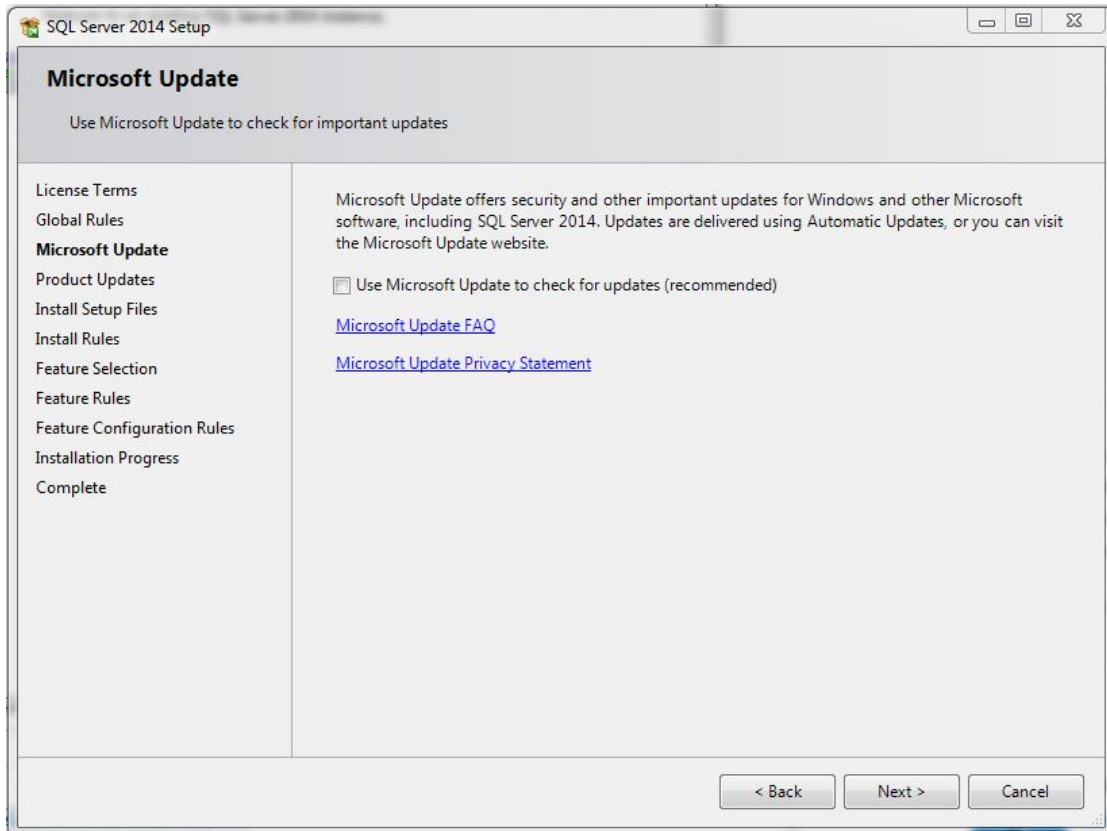
## SQL Server 2014

Please wait while Microsoft SQL Server 2014 Setup processes the current operation.

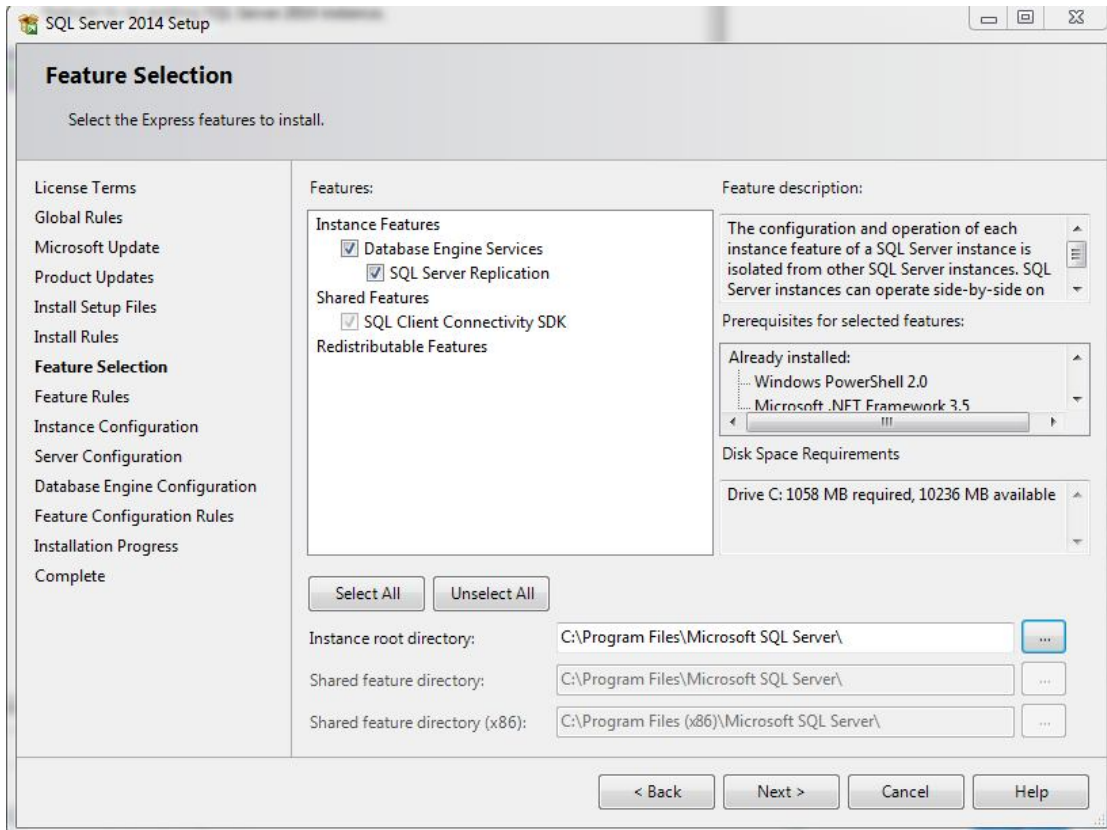
In window click on «I accept the license terms» and then **Next**



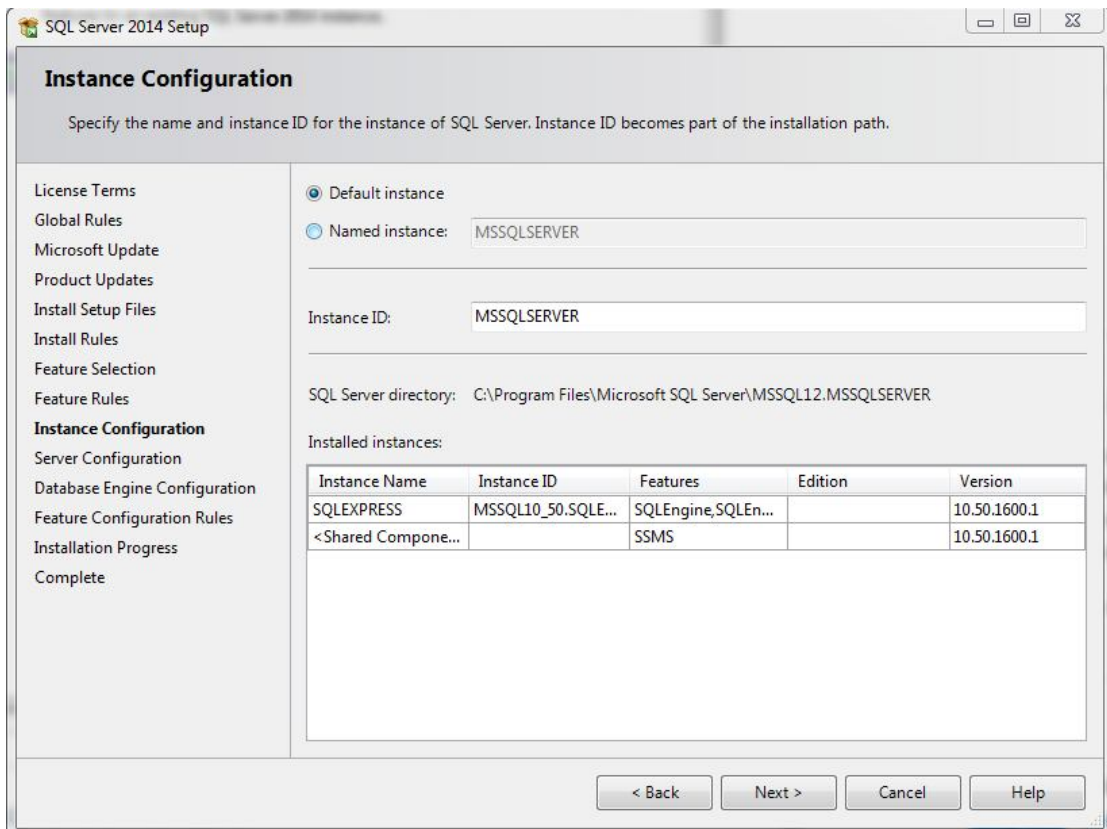
Continue with **Next**



Choose all the files from the list and click **Next**.

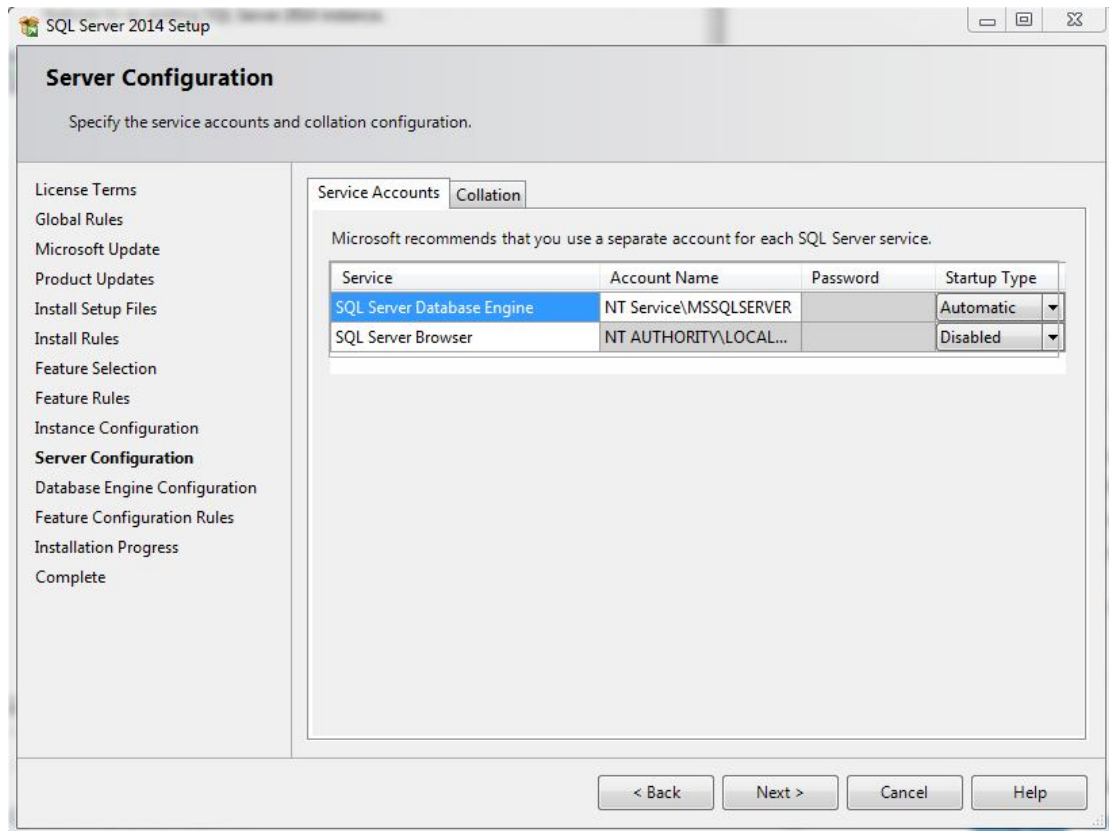


Choose **Default instance** to create a predefined instance of SQL, or choose **Named Instance** to change the name. Click on **Next**.

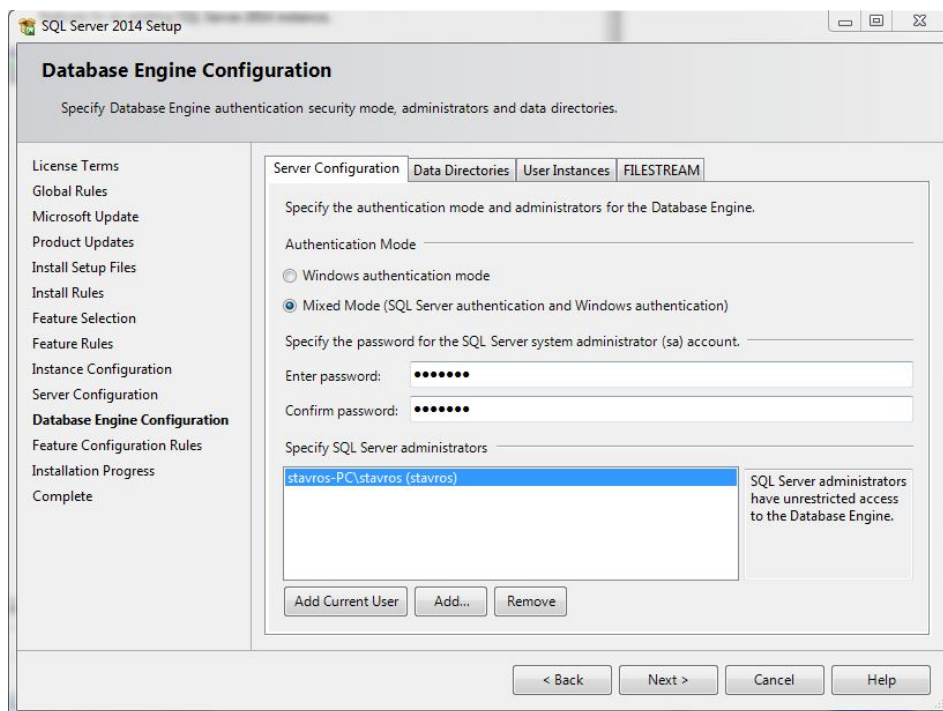




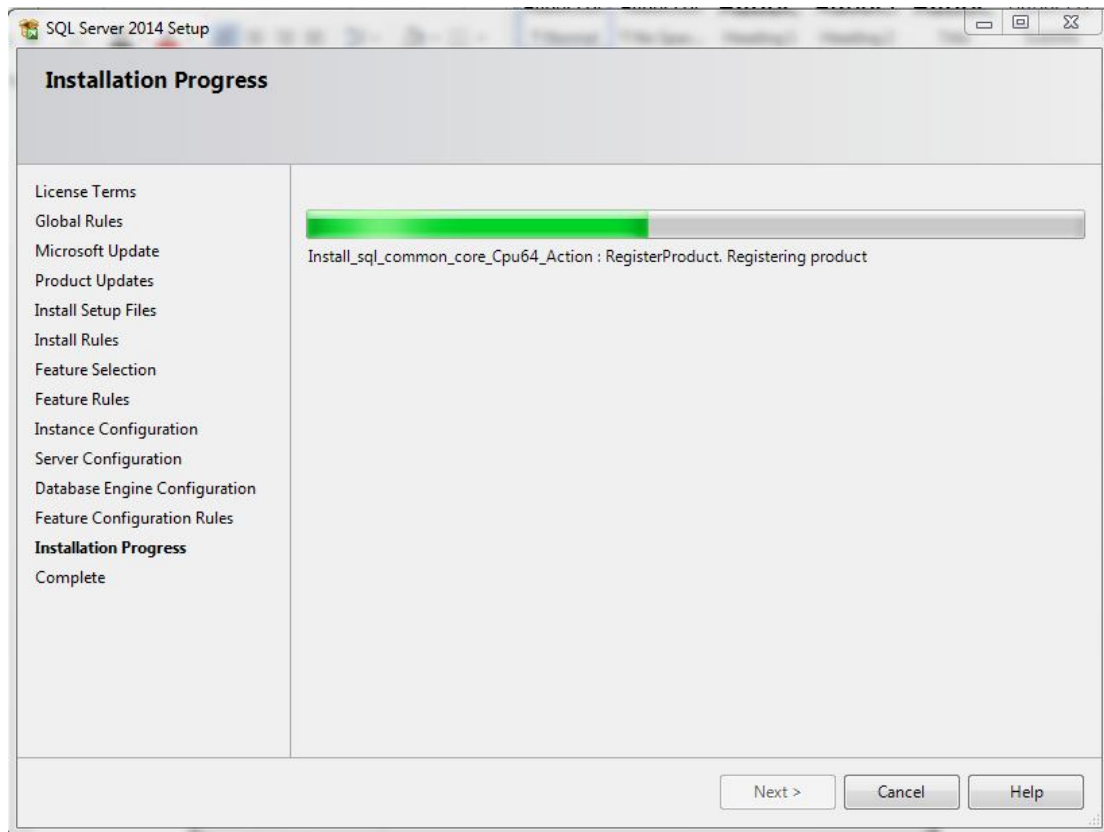
Select if you want the service to start automatically or manually (by you) every time you open your computer. It is not recommended to change the predefined configurations. Continue with **Next**.



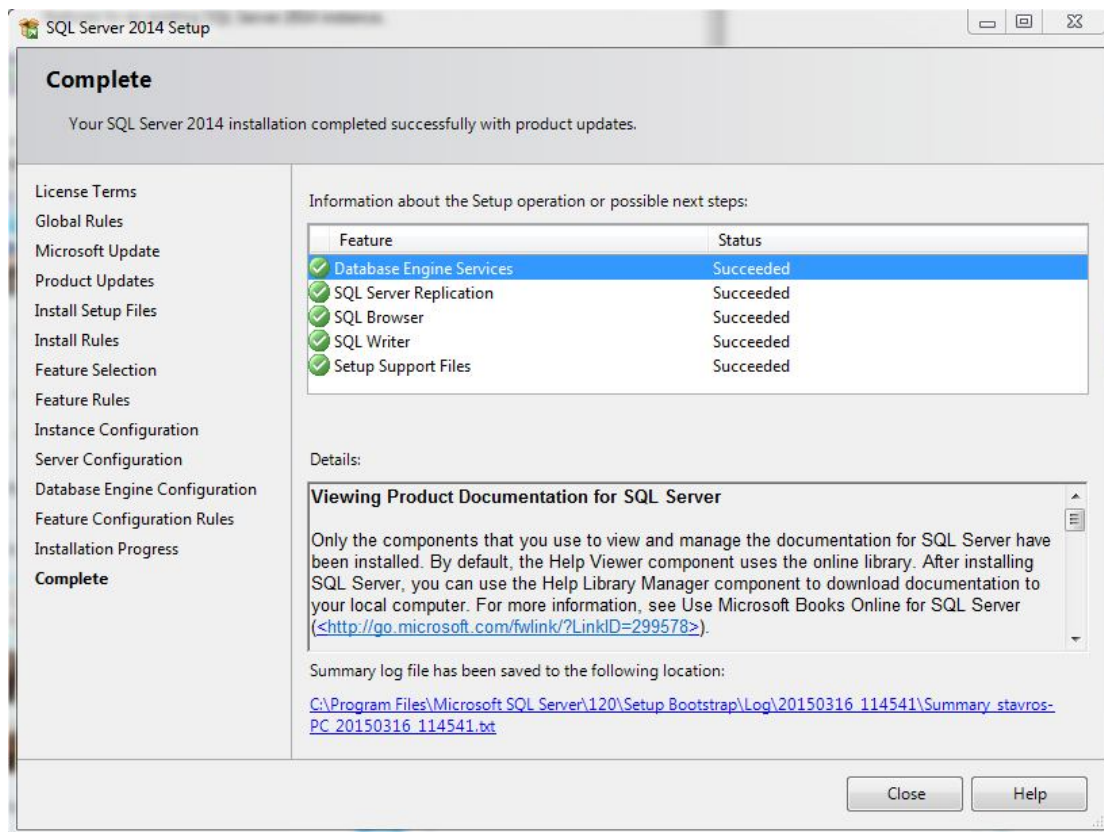
Select **Mixed Mode**. Insert a password for the login (sa) that is going to be created and click on **Next**.







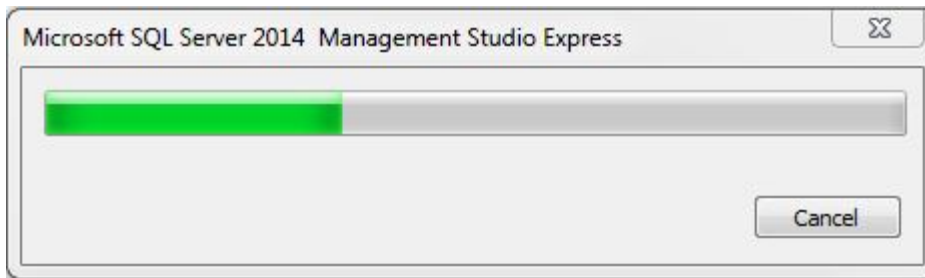
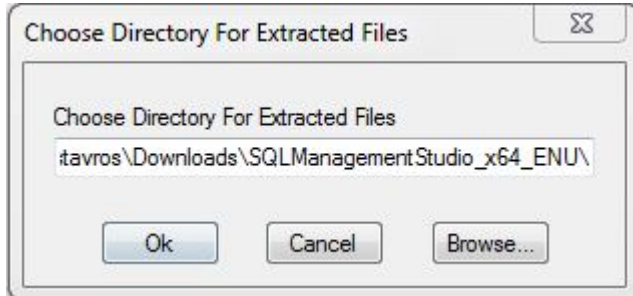
The installation of the SQL is successfully completed. Click on **Close** and let's move on to install Management Studio.



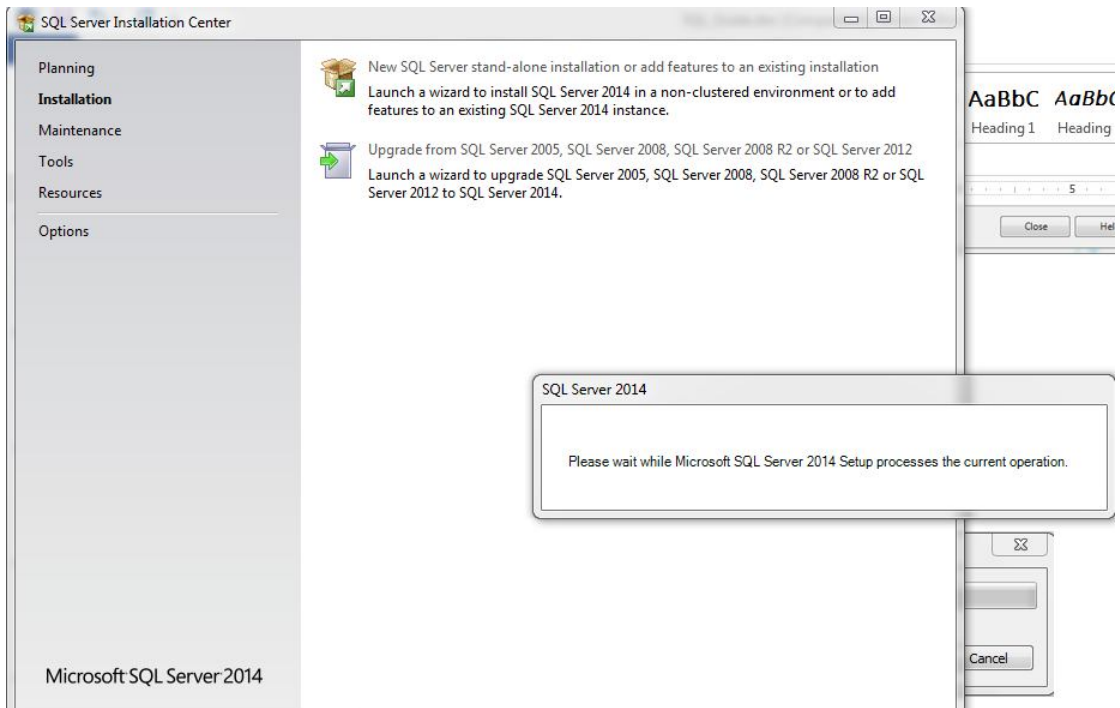
Now click on SQLManagement Studio...exe.



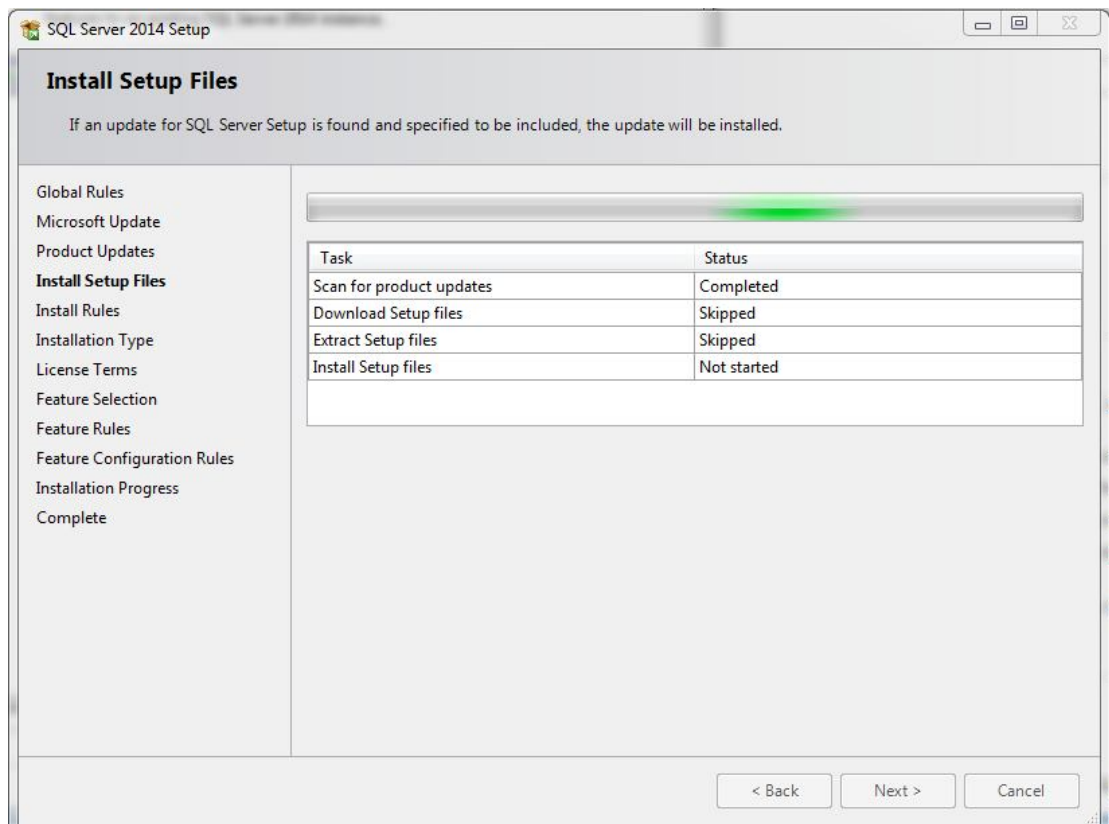
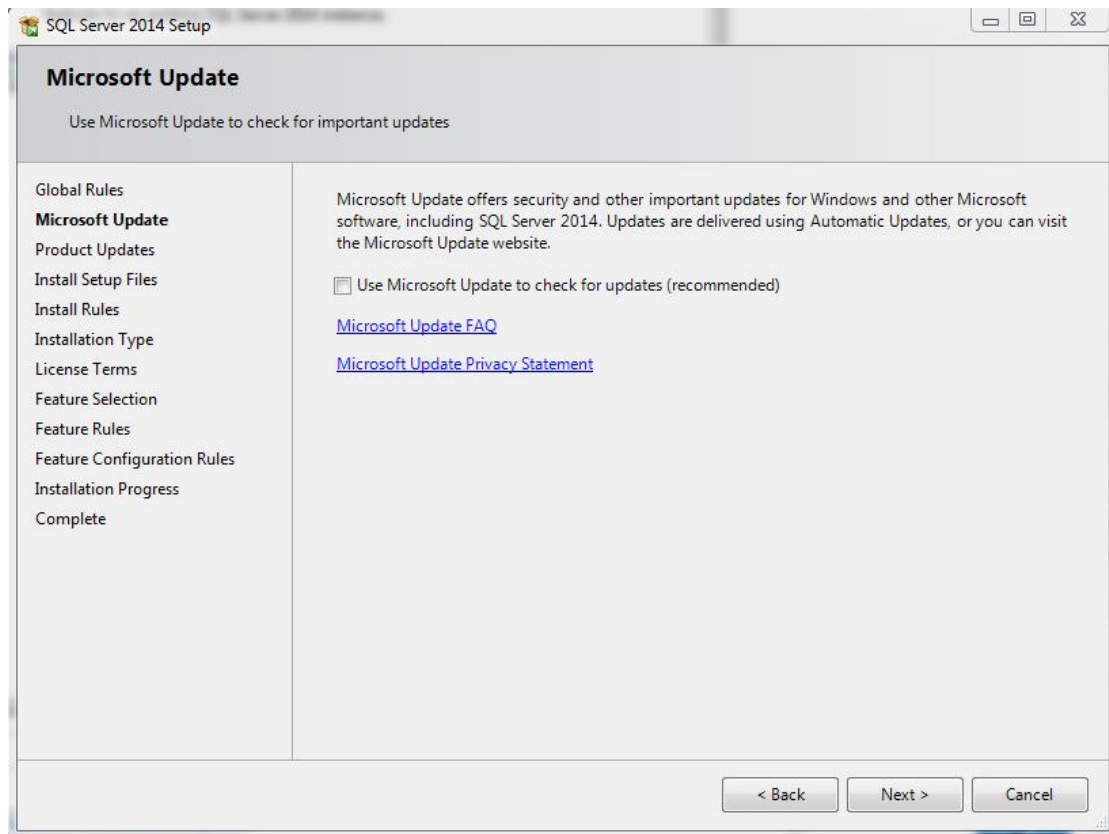
Choose the Directory to extract the files and OK.



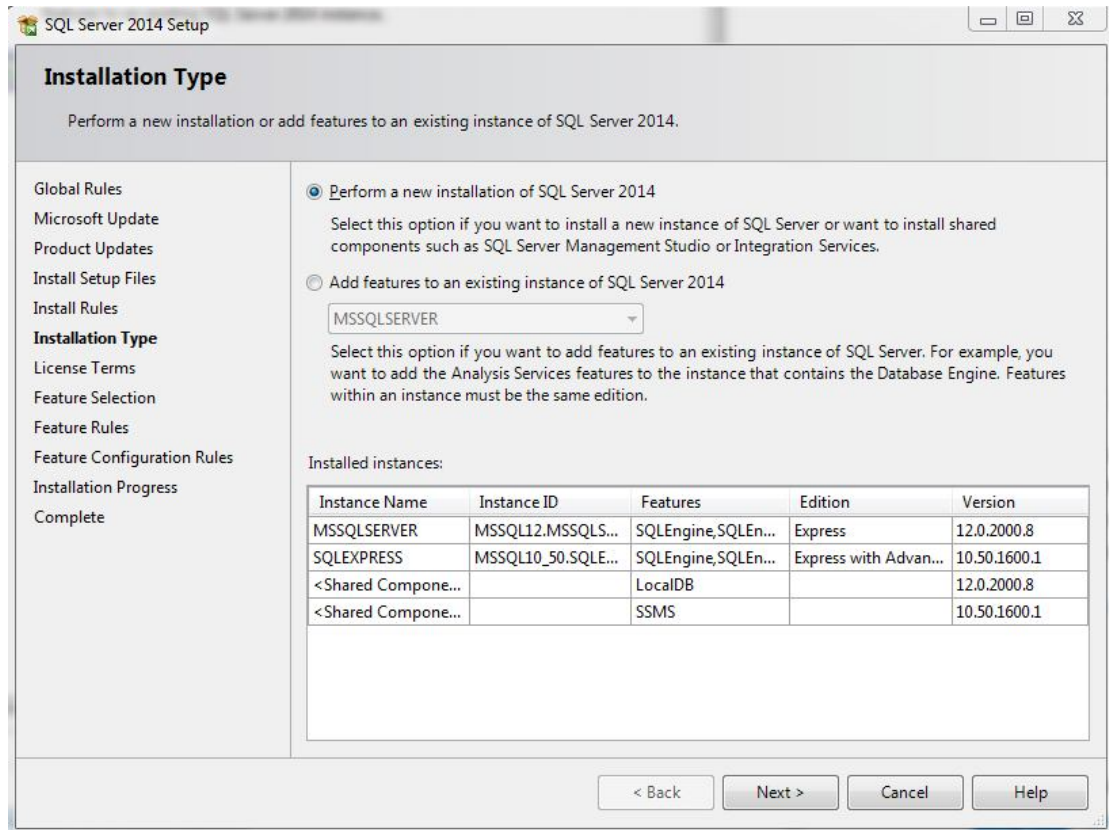
Choose **New Sql server stand-alone.....**



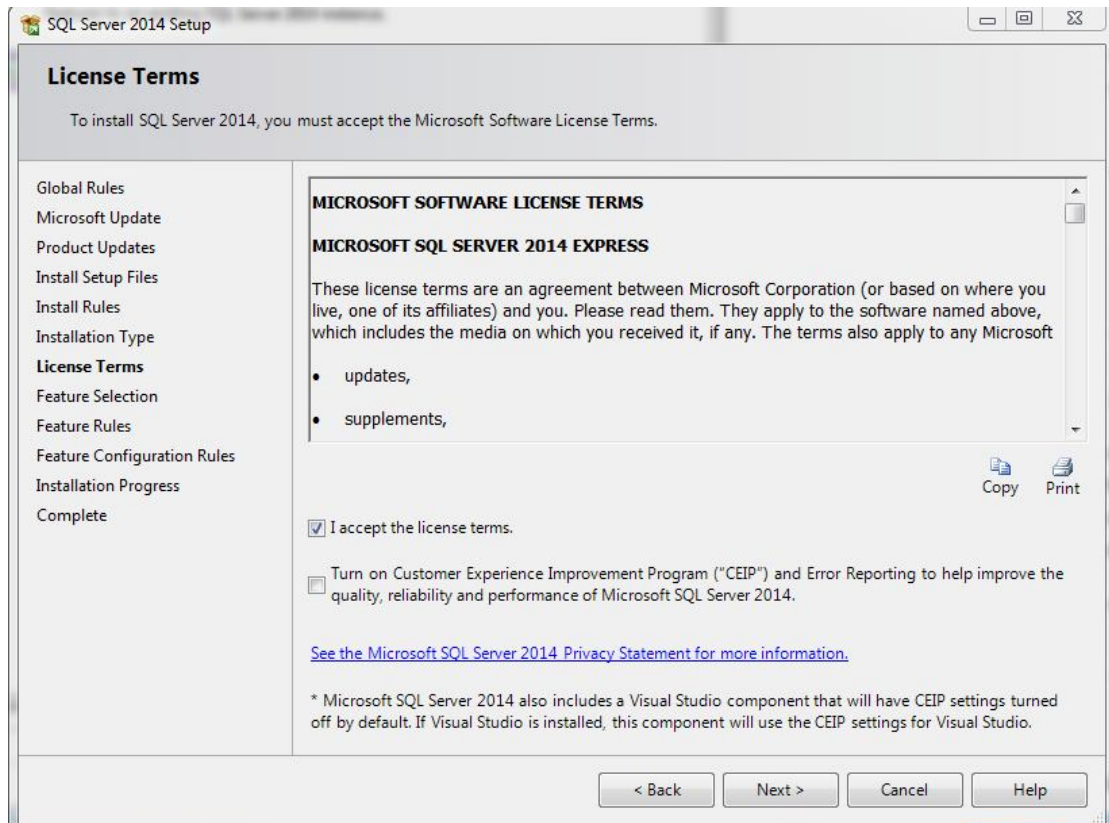
Click **Next** to continue.



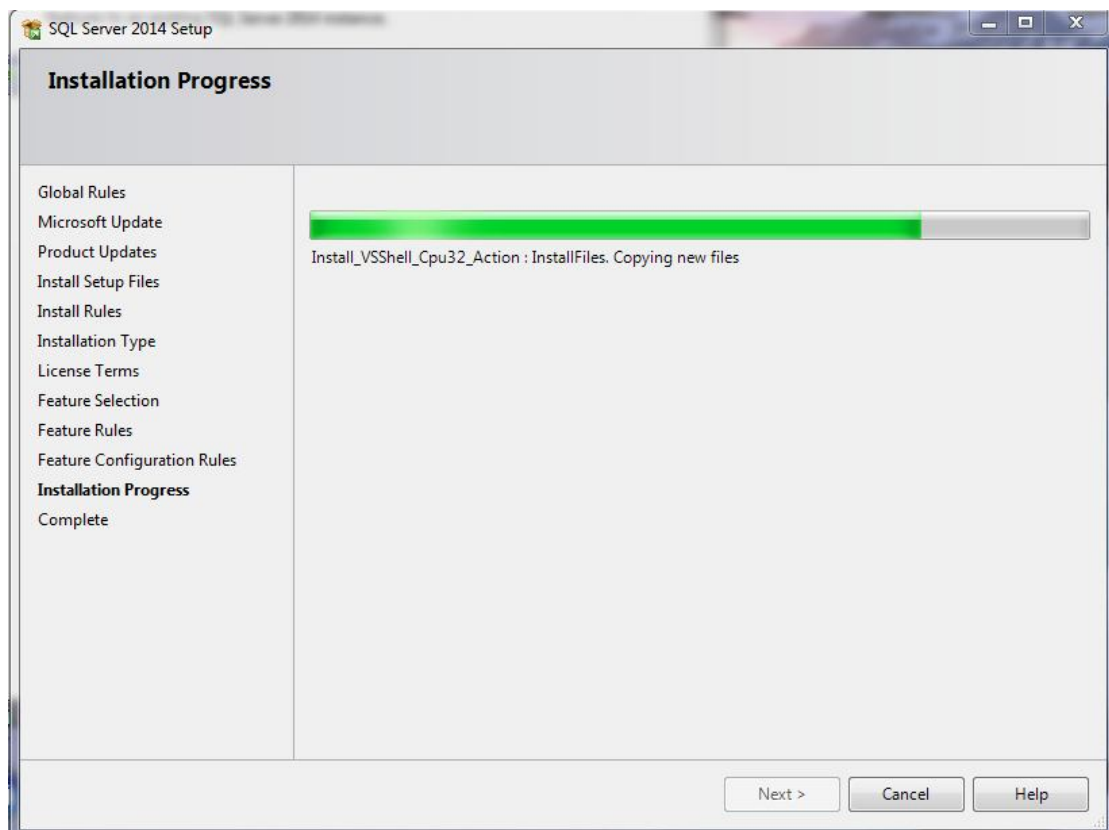
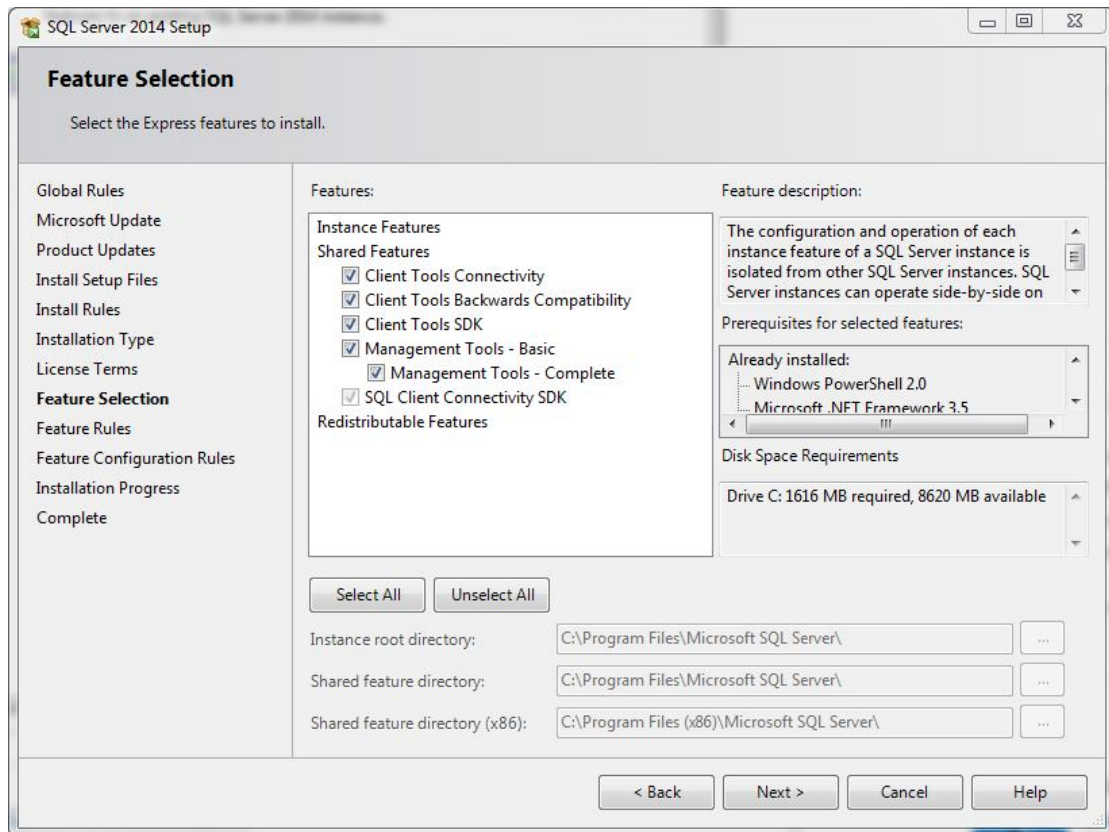
Select the first choice, **Perform a new installation of SQL Server 2014** and click **Next** to continue.



Select **“I accept the license terms”** and click **Next** to continue.

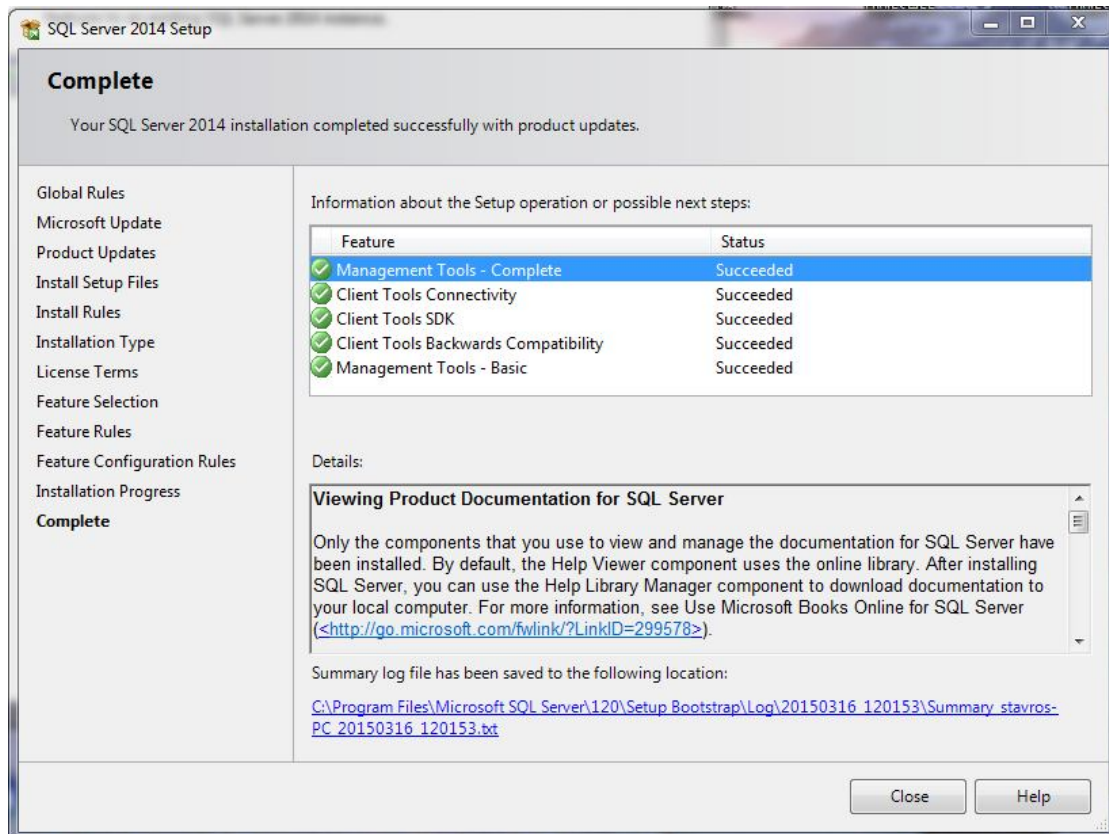


Select again all the features and continue with **Next**.





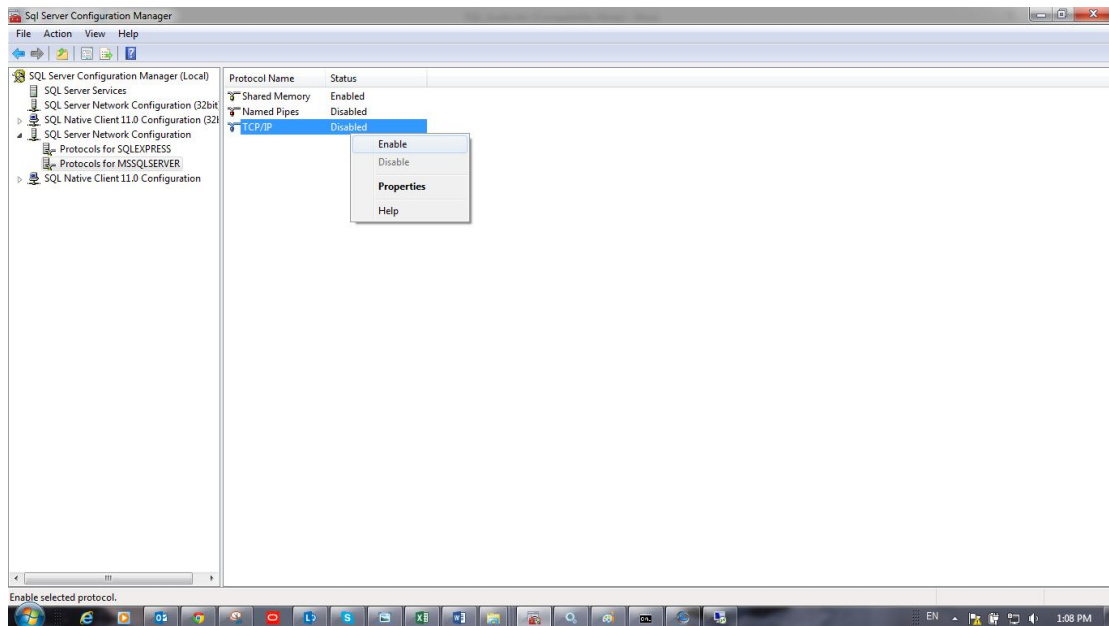
The installation is completed. Click on **Close**.



In the search field of Windows look for the SQL Server 2014 Configuration Manager.

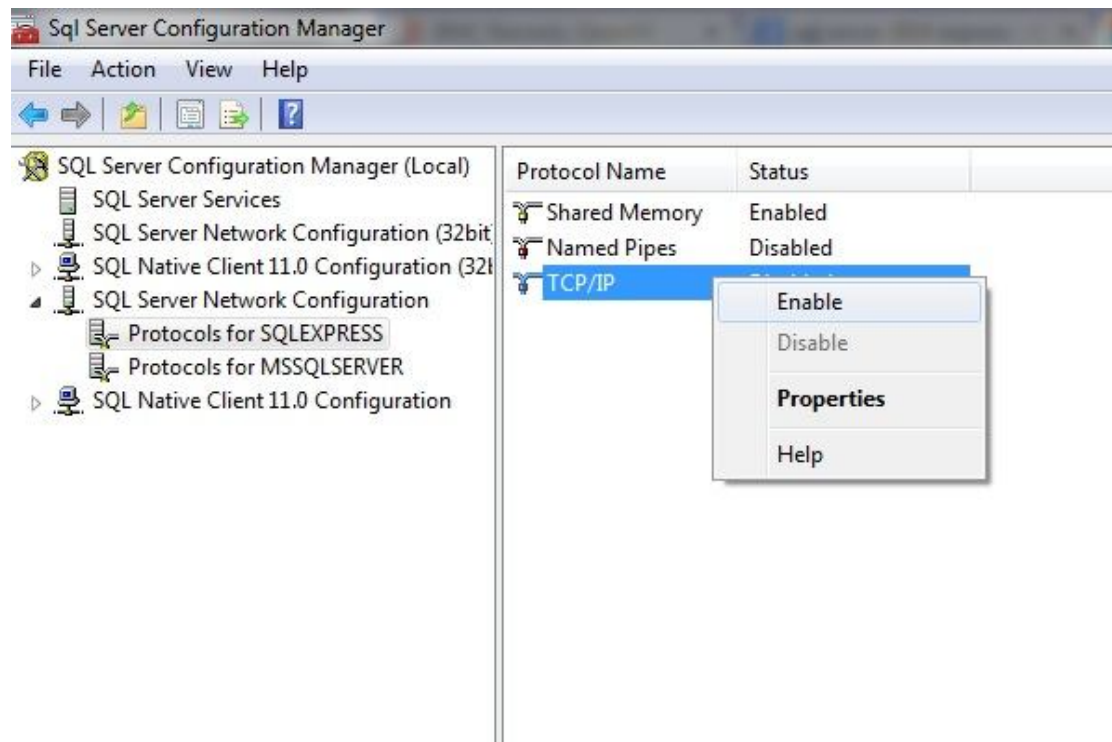


Select the “instance” we just installed and right click on TCP/IP.

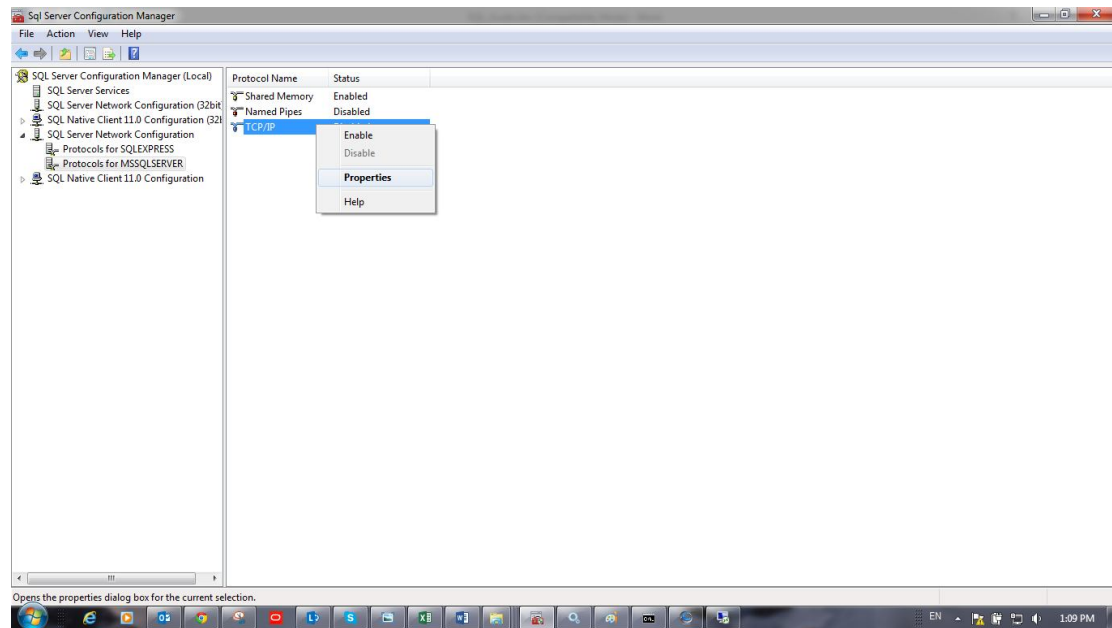




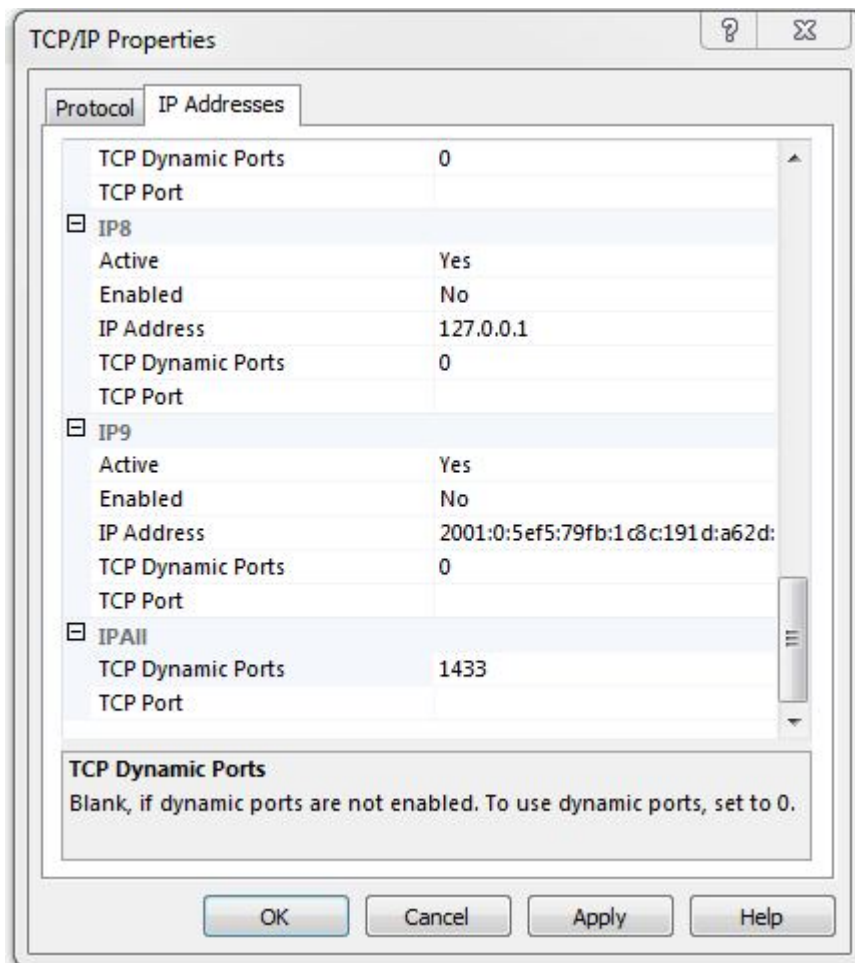
Select **Enable**.



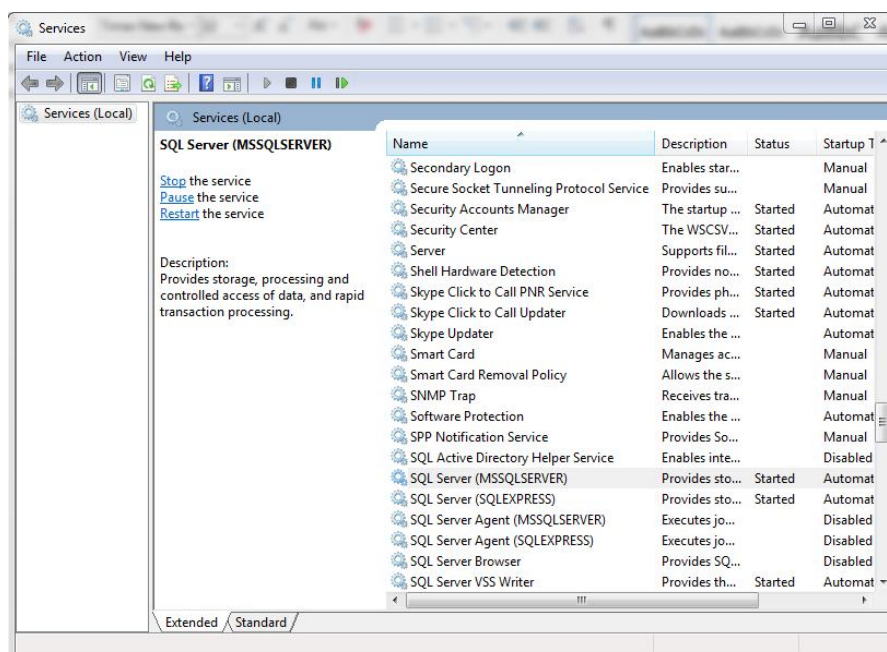
Right click and choose **Properties**.



Click on the tab IP Addresses and drag it down to define the “Port” where the “instance is goin to run. Define the “Port” 1433 and click **Apply**.

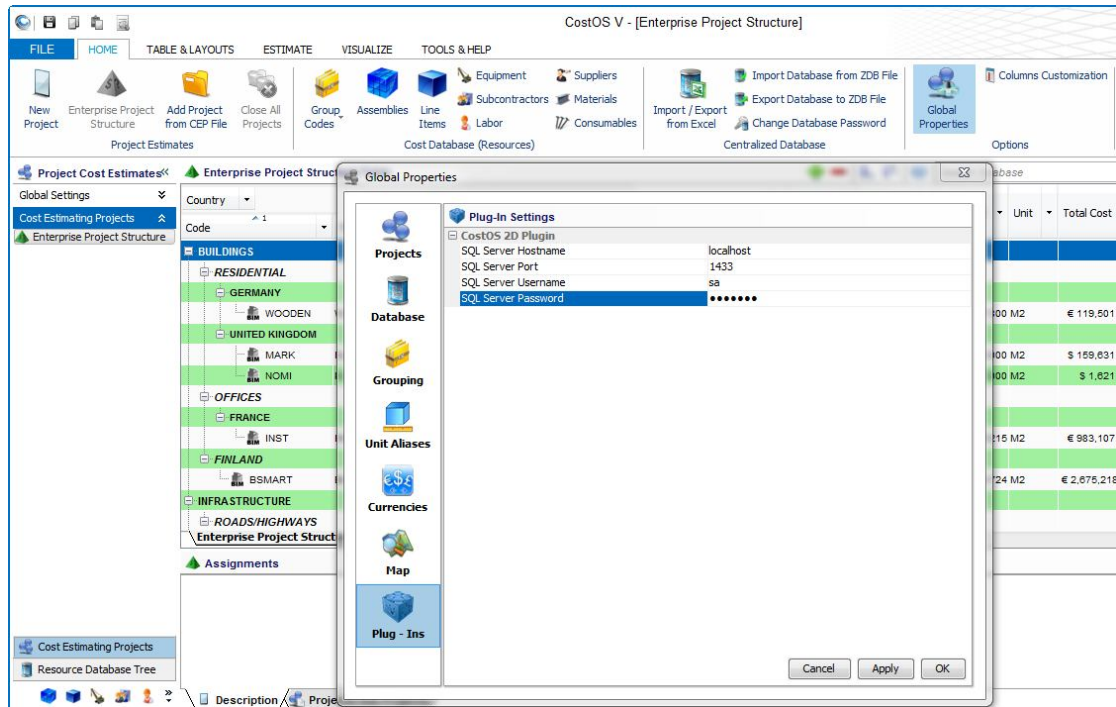


Open Services from your computer, look for SQL Server (MSSQLServer). Right click and select **Restart (Επανεκίνηση)**



Start CostOS and

Home tab> Global Properties> Plug-Ins, to define the sql credentials like we defined before.



Now you are able to open a project and select 2d Takeoff to create your Measurements.

